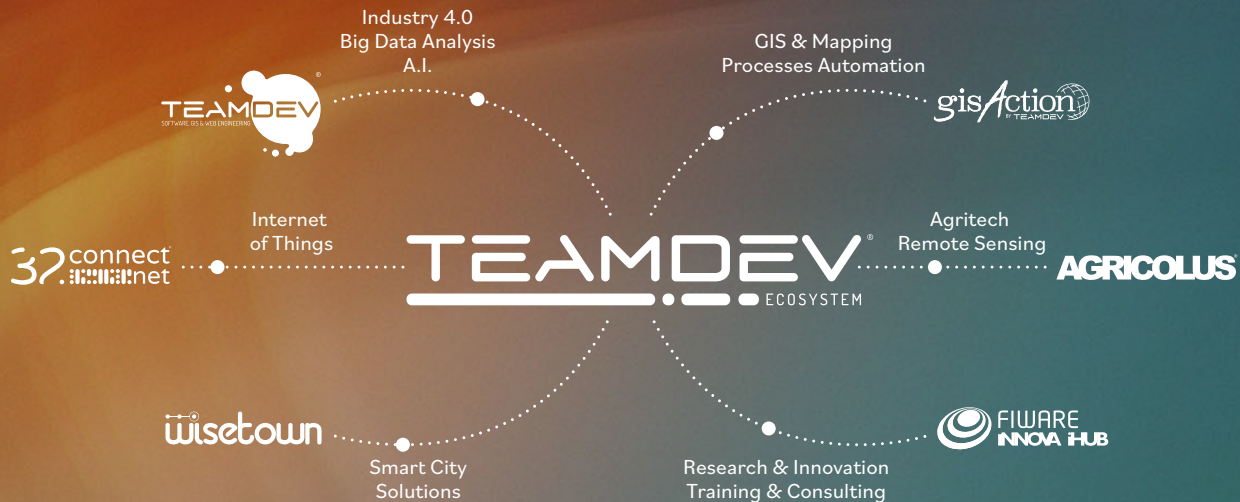


The logo for TeamDev Ecosystem is centered on a background of abstract, flowing, colorful shapes in shades of teal, blue, orange, and red. The text 'TEAMDEV' is in a bold, white, sans-serif font. Below it, a horizontal line is composed of several segments, with a small dot in the middle. To the right of this line, the word 'ECOSYSTEM' is written in a smaller, white, sans-serif font.

TEAMDEV<sup>®</sup>  
ECOSYSTEM

# OUR ECOSYSTEM



TeamDev Ecosystem is a dynamic and innovative company that has been driving growth and change since 2008. Based in Perugia, Italy, the company has evolved forming a multidisciplinary team specialized in software development, Geographic Information Systems (GIS), Data Analytics, ICT, and technical support.

TeamDev Ecosystem's high level of specialization and successful experiences have fostered strong partnerships with a wide range of clients, including private companies, public institutions, non-profit organizations, and industrial groups, both nationally and internationally.

As a leading player in major international networks of technological innovation such as Microsoft, Esri, Fiware, and Space Cooperative Europe, the company is at the forefront of technological advancements. Today, TeamDev Ecosystem operates through specialized brands in Italy and across 3 continents.



TeamDev is the division dedicated to driving technological and digital innovation in the Italian and international Local Governments.

The brand is the result of combined expertise of professionals in Geographic Information Systems, software development, Artificial Intelligence, Data Analysis, and Decision Support Systems (DSS).

Services and solutions developed by TeamDev are used for the innovation of local governments workflows, processes and data integration. Geographic information represents the added value of TeamDev's solutions, which consistently integrated spatial analysis as a distinct competitive advantage to support strategic planning of local government departments.



[www.teamdev.it](http://www.teamdev.it) | [info@teamdev.it](mailto:info@teamdev.it)

# STORIES



## **Municipality of Perugia**

Development of a more effective and usable georeferenced territorial data management system using Esri ArcGIS technologies. The system created allows the various municipal departments to manage city data more easily and to share it among departments. Additionally, several applications have been developed to manage the most relevant issues such as urban green areas, public works, urban development, tax system, emergency management, and the urban security system. Furthermore, a portion of the system's data has been made accessible to the public.



## **Institute of Statistics, Republic of Albania**

Integration of Geographic Information System (GIS) into the national census of Albania. An innovative approach that involved the construction of a digital geographic infrastructure to collect, aggregate, analyze and disseminate census data. The project included the configuration of a geodatabase for digitizing base maps, buildings and road boundaries; development of an application for real-time monitoring of census operations; creation of a navigable web app for sharing census results.



The logo for WiseTown, featuring the word "wisetown" in a white, lowercase, sans-serif font. The letter "i" has a small white circle above it, resembling a dot or a sensor. The logo is set against a blue background with a subtle geometric pattern.

WiseTown is an urban digital twin system created to support city governments and public administrations, empowering them to make informed decisions. It includes applications for city management, monitoring, geo-analytics, data visualization, statistics, citizen data collection, and civic participatory planning.

Users can learn how the city would react to specific inputs or scenarios, drawing information from multiple sources.

The solution embodies the essence of urban progress, transforming tomorrow's cities into sustainable, resilient, equity, and community-centricity models, fully complying with European standards outlined by the Connecting Europe Facility (CEF). WiseTown has gained recognition from some major international players in digital innovation for cities. It is a Gold Member of FIWARE, a European leader in urban innovation.



[wise.town](https://wise.town) | [discover@wise.town](mailto:discover@wise.town)



# STORIES



## Perugia Digital Twin

The Perugia Digital Twin project aims to transform the city into a highly efficient urban environment through the implementation of advanced technological innovations.

The solution, developed specifically for the Municipality of Perugia, integrates and analyzes data on the physical city, providing urban decision-makers with an advanced and innovative tool. It provides an overarching perspective that aids in informed decision-making and precise community monitoring.

Furthermore, the platform enhances active citizenship by incorporating an urban issue reporting system and a dedicated portal for cooperative project sharing between the administration and residents. This initiative fosters participatory planning and strengthens the collaborative relationship between the city's governance and citizens.



## Independence, Oregon (USA)

Development and configuration of a digital platform for real-time monitoring during the celebrations of July 4th in Independence, Oregon (USA). The tool is called WiseTown Situation Room and enables secure management of large events without the need for significant financial or personnel resources. Using this tool, it is possible to monitor crowds of people and logistical issues in real-time, enabling quick intervention when needed.





gisAction is the brand of TeamDev Ecosystem that supports non-profit organizations, NGOs and cooperation agencies through the innovative power of geographic technologies. The services and solutions developed leverage the potential of Geographic Information Systems (GIS) to innovate workflows, efficiently collect and manage data, measure results, and increase the impact of communication. The integration of GIS in sustainable development projects facilitates understanding of needs, mapping of work, performance analysis, and sharing among stakeholders. gisAction's solid experience in the use of geospatial technologies is certified by the partnership with Esri, the global market leader in geographic information system software, location intelligence, and mapping.

Since 2023, Esri has recognized gisAction as the only partner of reference in Europe for the Sustainability, National Statistics, and Conservation sectors and awarded it the Nonprofit Specialty. gisAction is also the only Italian partner to have been awarded the ArcGIS System Ready Specialty, awarded for demonstrated expertise in the use of Esri products.



[www.gisaction.com](http://www.gisaction.com) | [discover@gisaction.com](mailto:discover@gisaction.com)



# STORIES



People for development

## **Monitoring System for Urban Redevelopment in Maputo**

The "Rigenera" project, led by the AVSI Foundation and funded by the Italian Cooperation Agency, aims to redevelop Chamanculo C in Maputo by improving infrastructure and socio-economic conditions. The densely populated community has limited access to services and significant levels of poverty. AVSI uses GIS for territorial planning and urban regeneration, monitoring project progress using a digital cartographic platform. The project prioritizes inclusivity, resilience, socio-economic development, and environmental conservation, particularly among women and youth. GIS tools such as ArcGIS Survey123 and ArcGIS FieldMaps capture field data and display it on Operational Panels to track key performance indicators (KPIs). The advantages include data collection, real-time monitoring, and a clear representation of progress. This digital method improves decision-making and community involvement, effectively advancing the project's aims.



**Save the Children**

## **Technological enhancement for data collection and monitoring**

The project combines Save the Children Italia's MEAL and Social Innovation initiatives. The Social Innovation area required technical assistance for data collection and monitoring, whereas the MEAL area needed to incorporate these indicators into its strategic system. Initially, support consisted of consulting on Excel files, but gradually moved on to leveraging ESRI products such as Survey123 for data collecting and Dashboard for visualization. Tool training workshops were held for Save regions and local groups. The system, implemented in four pilot territories, consists of eight surveys (two per territory), four dashboards (one per region), and a planned data modification application. This shift enhanced data gathering from diverse Excel files to ordered, automated applications, helping the IS area technologically and enhancing the MEAL area's involvement with ESRI technologies, which is critical.



The logo features the text 'TEAMDEV' in a white, sans-serif font above the larger text 'R&D' in a bold, white, sans-serif font. The background is a dark red gradient with abstract, overlapping shapes in shades of red and orange.

TEAMDEV

R&D

TeamDev's R&D department specializes in Earth Observation (EO) and Artificial Intelligence (AI). TeamDev integrates diverse data sources, including remote sensing, ground data, and various open source and proprietary data, processing them with advanced AI algorithms. The multidisciplinary staff, comprising mathematicians, agronomists, geologists, and philosophers of science, ensures meaningful application of AI to EO data.

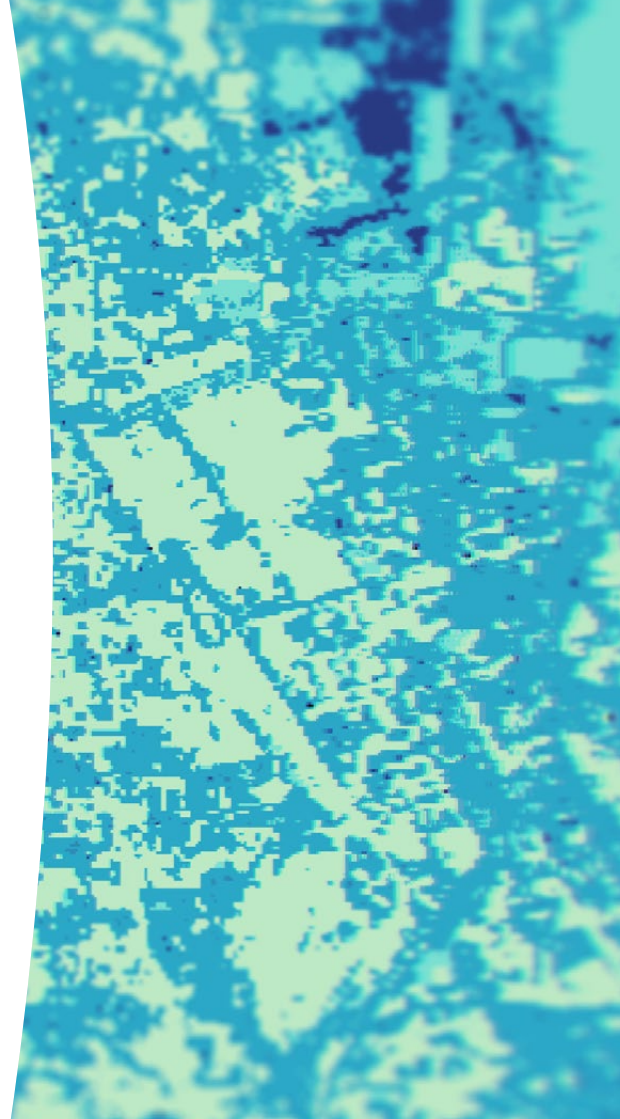
# STORIES

## **IRIDE project**

TeamDev is currently involved in the IRIDE project, funded by Next Generation EU and managed by the European Space Agency (ESA). This project, one of Europe's most significant EO programs, involves a constellation of diverse satellites and is promoted by the Italian Government for implementation in Italy by 2026, with support from ESA and the Italian Space Agency. TeamDev is working on the “Green Urban Areas Characterization” service, focused on analyzing urban and suburban green areas using multispectral optical images and other data sources. Machine Learning techniques, including various vegetation indices, are employed to estimate the average tree height in these areas.

## **EVOLUTION**

TeamDev is the lead partner in the EVOLUTION project, funded by Next Generation EU. EVOLUTION aims to address urban air quality and pollution challenges by analyzing high-resolution data on urban anthropogenic and biogenic CO2 fluxes, particulate matter 10 (PM10) distribution, and urban heat island (UHI) effects. The project integrates nature-based solutions (NBS) using the habitat template approach and advanced urban simulation algorithms, validated in three pilot cities: Catania, Naples, and Perugia. EVOLUTION seeks to revolutionize urban planning by combining advanced monitoring and modeling techniques with NBS to reduce pollution and improve air quality.



# AGRICOLUS<sup>®</sup>

Agricolus is a dynamic company that specializes in developing cutting-edge solutions for Smart Agriculture, with a mission to help agricultural companies optimize their field work using innovative technologies for data collection and analysis. At the heart of the company's operations is a powerful cloud platform that includes a range of applications for Smart Farming. These include Decision Support Systems (DSS), predictive models, intelligent pest control, and remote sensing, offering a complete solution to meet every agronomic need. By leveraging technology and data-driven insights, Agricolus is transforming the agricultural industry and setting new standards for efficiency, productivity, and sustainability.



[www.agricolus.com](http://www.agricolus.com) | [discover@agricolus.com](mailto:discover@agricolus.com)

32connect.net is a cutting-edge design and development laboratory that specializes in creating technological solutions for the Internet of Things (IoT) universe. With an advanced Research and Development department, the company is constantly working on conceiving, designing, and experimenting with devices that use microprogrammed electronics for telemetry, automation, and IoT architectures.

In addition to its hardware expertise, 32connect.net also provides custom software development and cloud service configuration for specific applications. The company works with Tooway satellite technology to ensure connectivity solutions worldwide and has developed standard solutions to support Agriculture 4.0 and Industry 4.0.



[www.32connectnet.it](http://www.32connectnet.it)

32connect.net

The logo for 32connect.net is displayed in white text against a dark blue background. The number '32' is large and stylized, followed by 'connect' in a smaller font, and '.net' at the end. Below the 'connect' part, there is a decorative element consisting of several vertical bars of varying heights, resembling a barcode or a digital signal. The background features a dark blue gradient with scattered green and yellow dots and lines, suggesting a network or data flow.



FIWARE Innova iHub is a non-profit organization aimed at drive technological innovation in Italy by providing training, consulting, and co-design services for digital solutions. As a part of the global network of Digital Innovation Hub powered by FIWARE, Innova iHub promotes the use of open-source tools in fields such as Smart City and Smart AgriFood. Innova iHub provides consultancy services, training on FIWARE technologies, and support for national and international projects.



[fiwareinnova.org](https://fiwareinnova.org) | [discover@fiwareinnova.org](mailto:discover@fiwareinnova.org)



CiStai is a non-profit initiative with a mission to promote civil economy ideas and best practices among businesses and society: the goal is to inspire and support businesses to adopt more socially responsible practices. To achieve this, CiStai offers training courses for organizations and companies, creates networks of businesses, provides technical and financial support to start-ups and cooperatives through its microcredit office for the civil economy. In addition, CiStai organizes educational activities for schools on topics such as sustainability, active citizenship, and civil economy.



[www.cistai.org](http://www.cistai.org) | [anchetu@cistai.org](mailto:anchetu@cistai.org)

CISTAI



# WHERE WE WORK

---



ITALY

SWISS

MOLDOVA

ALBANIA

MALI

IVORY COAST

MOZAMBIQUE

ESWATINI

TIMOR-LESTE



Via Settevalli, 320 - 06129 Perugia - Italy  
Tel +39 075 9724 382  
[teamdevecosystem.it](http://teamdevecosystem.it)

