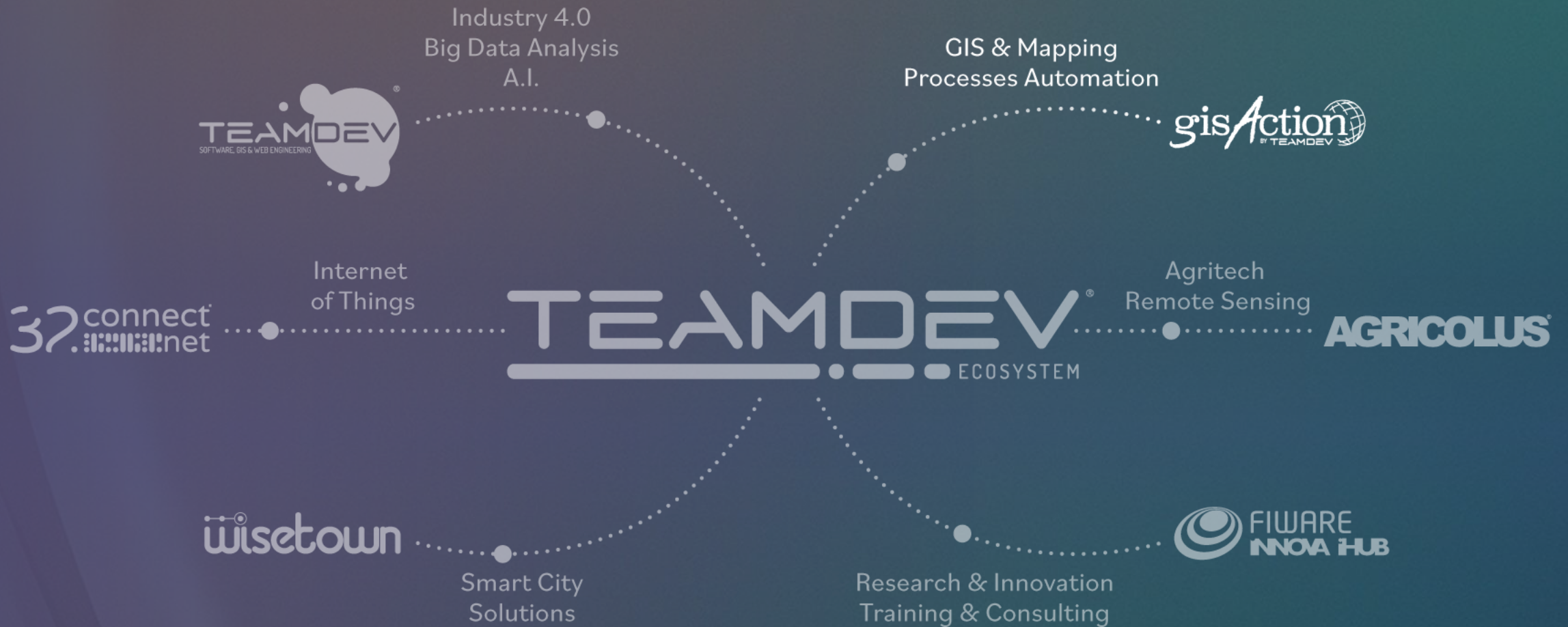


gisAction  
BY TEAMDEV 

# //gisAction within the TeamDev ecosystem



//vision

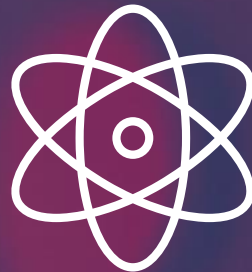


## GIS & mapping for Sustainable Development



### Empower

human  
activities



### Increase

collaboration and  
cooperation



### Drive

sustainable  
development





# who do we support?

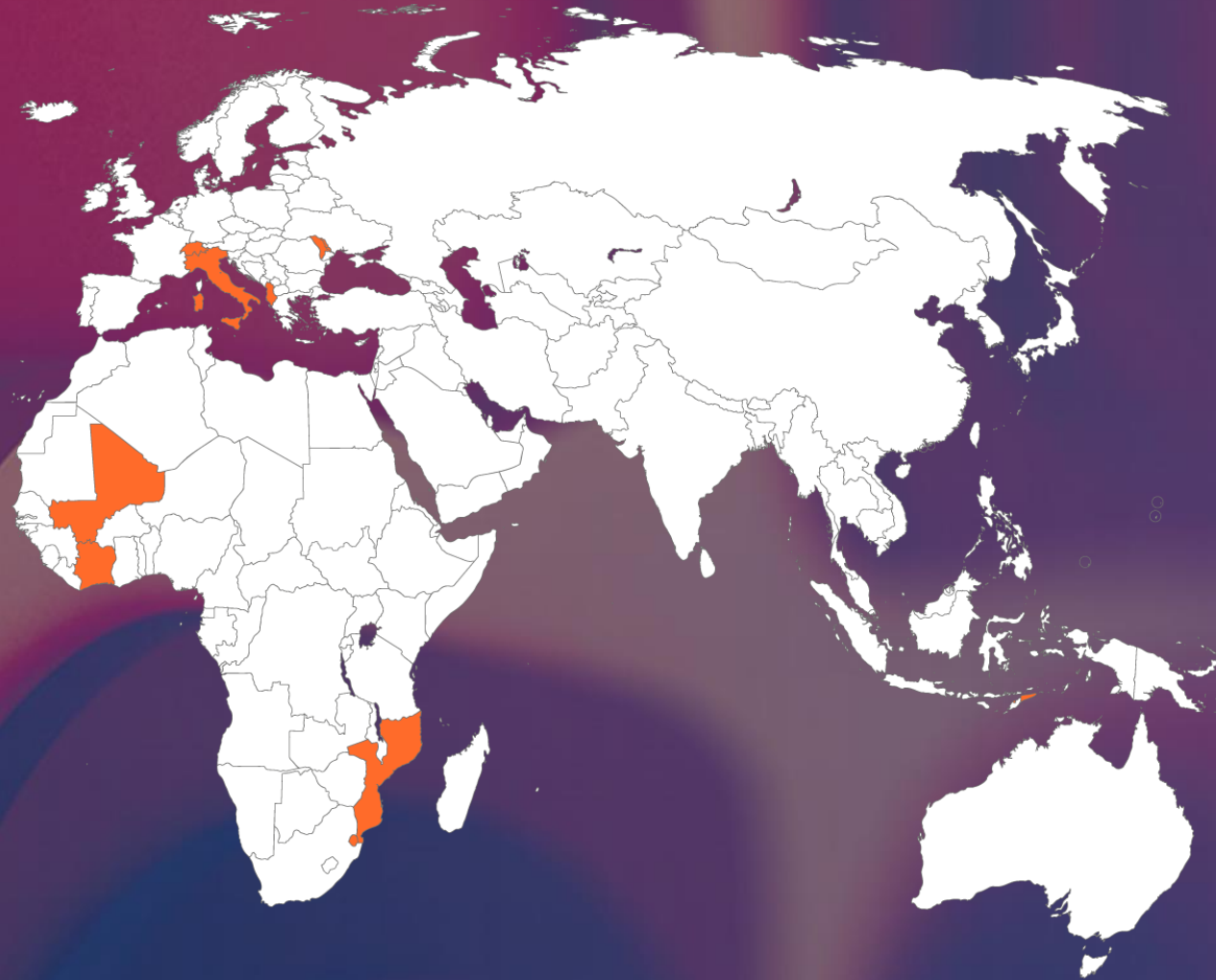
- Non-Governmental Organizations
- Non-Profit Organizations
- National Agencies for International Cooperation
- UN Specialized Agencies
- National Statistical Offices
- Private Companies

# goals

gisAction facilitates the work of sustainable development players through Geographic Information tools, making their efforts more efficient

- innovate and digitize workflows
- collect and manage spatial data
- measure, mapping and improve results
- increase the impact of communication

//where



## our 2023

- Italy
- Albania
- Moldova
- Timor-Leste
- Mali
- Ivory Coast
- Mozambique
- eSwatini

//how

# our solutions



GIS for  
**National Statistics**



GIS for  
**Urban regeneration**



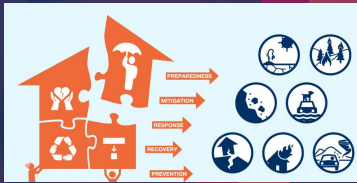
GIS for  
**International Cooperation  
MEA<sup>2</sup>Ls**



GIS for  
**Cultural heritage**



GIS for  
**Conservation**



GIS for  
**Climate change & Disaster  
Risk Reduction**



GIS Data  
**Value Chain**



# GIS for National Statistics

*Census innovation in 3 steps*



GIS strengthens statistical systems by integrating location-based digital tools, improving the accuracy of data collection, analysis, and dissemination in the pre-enumeration, enumeration, and post-enumeration phases.

- Creating a geodatabase in a GIS environment
- Developing tools for real-time monitoring
- Developing tools for data visualization
- Implementation of web applications for data dissemination

## Some Testimonials



Schweizerische Eidgenossenschaft  
Confédération suisse  
Confederazione Svizzera  
Confederaziun svizra



# GIS for MEA<sup>2</sup>LS

Monitoring, Evaluation, Accountability, Advocacy, Learning & Sharing

Integrated Web GIS tools to support planning and monitoring of organizational processes and the project life cycle.



**M**  
**E**  
**A**  
**A**  
**L**  
**S**



Measure through indicators, and gain in accuracy



Evaluate change, and gain in credibility



Demonstrate results, and gain in accountability



Tell success stories, and gain community



Understand for improvement, and gain in effectiveness



Share, and win everybody!!

## Some Testimonials



People for development



gisaction.com

# GIS for Conservation

*Support tools for park surveillance and management*

Tools for park surveillance and conservation, to empower managers with information on both human safety and biomonitoring of natural resources.



- Data ingestion solution: geographic data, IoT, GPS...
- Security: geo-localized view of agents.
- Remote monitoring of infrastructure
- Biomonitoring: flora and fauna
- GIS-based decision support system

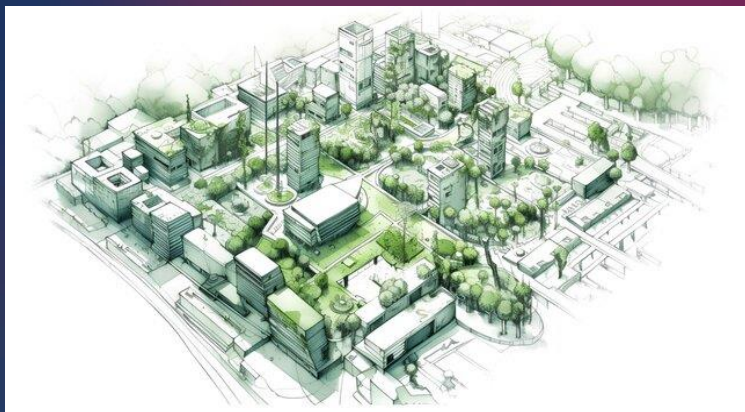
## Some Testimonials



# GIS for Urban Regeneration

Web GIS for city mapping and participation

Data collection, visualization and spatial analysis tools to improve the quality of life for citizens and lead sustainable urban and human growth.



- Spatial mapping
- Multi-actor collaboration PA-OSC-Citizens
- Community mapping: Cartography and participatory planning
- Storytelling and advocacy

## Some Testimonials



People for development



Fondazione Paolo Bulgari



# GIS for Cultural heritage

*Preservation, promotion and participation for cultural heritage*

GIS solutions to support the management, documentation and promotion of Artistic, Cultural and Environmental Heritage sites of territories.



- Data management for cultural heritage monitoring
- Collaborative and participatory citizen/user processes
- Storytelling for dissemination and promotion
- Virtual tours, 3D, augmented reality

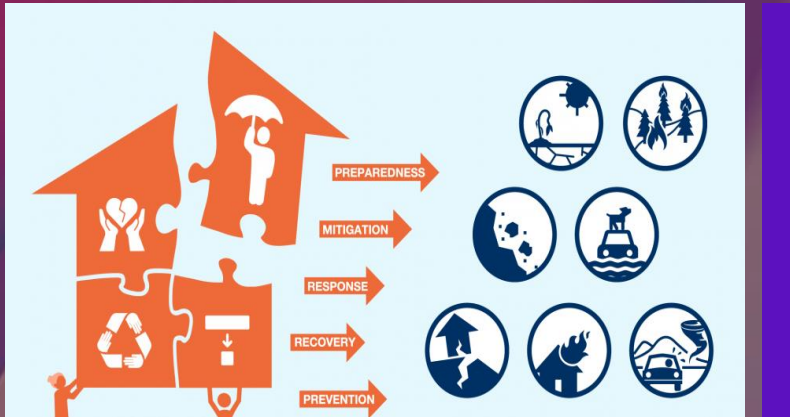
## Some Testimonials



# GIS for Climate change & DRR

*Geospatial technology for effective crisis management and community empowerment*

GIS for disaster risk reduction and vulnerability analysis to mitigate humanitarian crises. Support (re)investment policies and increase the resilience and capacity of communities to cope with crisis.



- EO e change detection
- Mappatura degli elementi a rischio
- Hazard mapping
- Risk mapping
- Site location / Suitability analysis
- Dati spaziali e strumenti di modellazione per azioni anticipatorie

## Some Testimonials

**cospe**  
ONLUS



People for development



gisaction.com

# GIS Data Value Chain

Maximizing the impact of geospatial data across organizational processes

Actions, advice, solutions for promoting the value of data and geographic information in, through and out of organizations.



- Data Collection
- Data Visualization
- Data Analysis
- Data Management
- Storytelling
- Training
- Support

## Some Testimonials



Save the  
Children®



UNODC

United Nations Office on Drugs and Crime



Caritas  
Diocesana  
Perugia - Città della Pieve



LEGAMBIENTE



FONDAZIONE  
DE AGOSTINI



WORLD  
METEOROLOGICAL  
ORGANIZATION



gisaction.com

We are working on different levels:

- **National level :**  
we work towards engaging 20% of Italian NGOs.
- **International level :**  
Increase the number of projects with long standing customers and partners, approach new clients offering our vertical solutions
- **Reinforcing collaboration** with International groups, International Cooperation and United Nations Agencies.

Focusing on:  
**Europe, Mediterranean regions and Africa**



- Participation as sponsors and exhibitors at international and national events on **innovation and sustainable development**
- Annual participation at Esri events "**GIS for Sustainable World Conference**" in Geneva and "**European Development Summit**" in Berlin
- Annual organization of **local GIS Day** in conjunction with Esri global celebrations
- Contributions to **peer-reviewed journals** such as Geosmart Magazine, Rivista GeoMedia, Esri ArcUser, Esri ArcNews, The Science of Where Magazine



# Esri Specialties



Nonprofit  
Specialty



ArcGIS System Ready  
Specialty

## Official Esri Partnership Program



Conservation

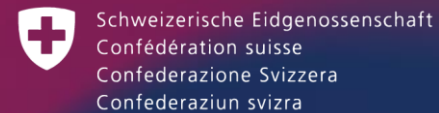


Official Statistics



Sustainability

//some of our partners



# Thank you



[discover@gisaction.com](mailto:discover@gisaction.com)



[gisaction.com/en](https://gisaction.com/en)

